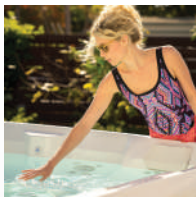


HIGHLIFE® COLLECTION

# ENVOY®



FreshWater® IQ  
System Ready



100% Filtration  
SilentFlo Circulation



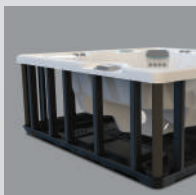
Moto-Massage® DX



Super Energy  
Efficient



Color LCD  
Touchscreen



Polymer Substructure  
& Base Pan



Salt  
System  
Included  
freshwater®



Shown with Alpine White Shell  
and Charcoal Cabinet

|               |                |             |                |
|---------------|----------------|-------------|----------------|
| <b>People</b> | <b>Seating</b> | <b>Jets</b> | <b>Voltage</b> |
| 5 Seats       | Lounge         | 55 Jets     | 230 V          |

**Size**  
8'4" x 7'7" x 38" | 254 cm x 231 cm x 97 cm

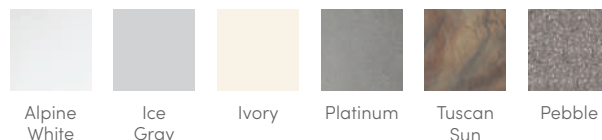
**Water Care**  
FreshWater® Salt System Included

# HIGHLIFE® COLLECTION

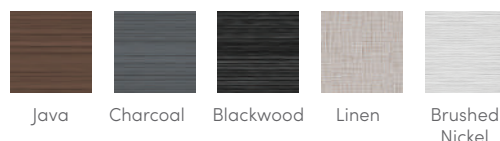
# ENVOY®



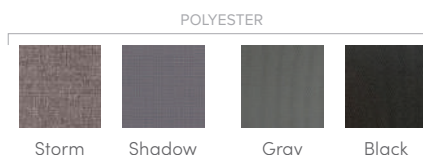
## SHELL COLORS



## CABINET COLORS



## COVER COLORS



### CABINET AND SHELL COLOR OPTIONS\*

| Cabinet Colors      | Java  | Charcoal   | Blackwood                            | Linen   | Brushed Nickel                       |
|---------------------|---|--|--------------------------------------|---|--------------------------------------|
| <b>Shell Colors</b> | Alpine White<br>Ice Gray<br>Ivory<br>Tuscan Sun<br>Pebble | Alpine White<br>Ice Gray<br>Platinum<br>Tuscan Sun<br>Pebble | Alpine White<br>Ice Gray<br>Platinum | Alpine White<br>Ivory<br>Tuscan Sun<br>Pebble | Alpine White<br>Ice Gray<br>Platinum |

### LEGENDARY MASSAGE

#### 55 Personalized-Control Jets

- 2 Moto-Massage® Seats
- Soothing Stream® Seat
- Precision® Jet Seat
- Captain's Seat

### EASY WATER CARE

**Water Care System** FreshWater® Salt System Included  
Smart Monitoring System Optional

**Filtration System** 100% No-bypass Filtration  
Exclusive, High-flow Tri-X® Filters  
325 sq. ft. Filtration Area

### LEADING ENERGY EFFICIENCY

**Jet Pump 1** Wavemaster® 9000; One-speed, 2.5 HP Continuous Duty,  
5.2 HP Breakdown Torque

**Jet Pump 2** Wavemaster® 9200; Two-speed, 2.5 HP Continuous Duty,  
5.2 HP Breakdown Torque

**Circulation Pump** SilentFlo 5000® for quiet, continuous filtration

**Heater** Titanium No-Fault® 4,000 W / 230 V

**Insulation** Multiple Layers of Foam Insulation; Certified to California  
Energy Commission (CEC) and APSP 14 energy efficiency  
standards for portable spas

**Cover** WeatherPro™ 4" Tapered Custom-Fit with Hinge Seal

### SIZE

**Dimensions** 8'4" x 7'7" x 38" / 254 cm x 231 cm x 97 cm

### CAPACITY

**Seating Capacity** 5 seats with lounge

**Water Capacity** 455 gallons / 1,725 liters

**Weight** 785 lbs. / 355 kg dry; 5,455 lbs. / 2,480 kg filled\*\*

### ADDITIONAL FEATURES

**Smart Spa Technology** Hot Spring Spas App, Powered by the Connected Spa Kit

**Water Feature** BellaFontana® with 3 illuminated arcs of water

**Cover Lifters** CoverCradle®, CoverCradle II, Lift 'n Glide®, or UpRite®

**Steps** Steps are available to match cabinet colors

**Entertainment** Bluetooth® Wireless Sound System (Optional)

**Control System** IQ 2020® with Color LCD Touchscreen  
230 V / 50 amp, 60 Hz  
(Includes G.F.C.I. protected sub-panel)

**Lighting System** Luminescence® multi-color four-zone

**Cooling System** CoolZone™ (Optional)

\*No special orders or shell substitutions available. Actual colors and products may vary from print representation. See dealer to verify.  
\*\*Includes water and 5 adults weighing 175 lbs. each.